



**BREECH-LOCK**

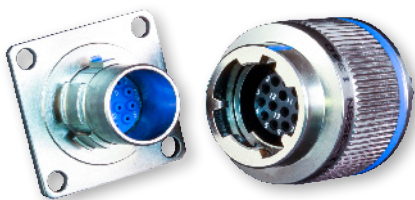
# MIL-DTL-38999 Series IV

## For missile launch controls and other severe vibration applications

From vertical launch fire-control, tracking, and multi-target missile systems to rugged industrial applications such as mining/gas-pressure blasting, the Glenair's DLA qualified MIL-DTL-38999 Series IV connector is the ultimate solution for positive and reliable breech-locking connector performance. MIL-DTL-38999 Series IV plug and receptacle connectors are available in shell sizes 11–25, with all Mil-Std 1560 insert arrangements as well as high-density and hybrid shielded contact arrangements. The heart of the Series IV connector is its coupling nut/locking technology which provides rock solid breech-lock mating augmented with both primary and secondary locking mechanisms. Environmentally sealed, EMI grounded, and outfitted with pin-to-pin mating protection to prevent circuit shorts and mechanical damage, Glenair MIL-DTL-38999 Series IV QPL connectors deliver unsurpassed reliability and anti-demating performance.



- 100% made in America
- QPL manufacturer of MIL-DTL-38999 Series IV Class F, W and G connectors
- Optimized for SWAMP area applications
- Quick-disconnect 90° breech coupling mechanism
- Visual, audible and tactile full-mate indicators
- Integrated EMI grounding fingers
- -65°C to 200°C operating temperature range



Series IV solutions are available in environmental and hermetic class configurations in shell sizes from 11–25 supporting the full range of MIL-STD-1560 insert arrangements



Glenair's complete Series IV solution includes protective covers and dummy stowage receptacles—available in all sizes, materials, and plating configurations.

BREECH-LOCK

# MIL-DTL-38999 Series IV Type, Breech Coupling

## Anti de-coupling, vibration and shock resistant DLA qualified

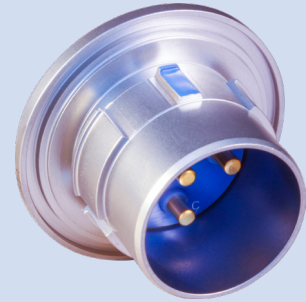


### MECHANICAL AND ELECTRICAL PERFORMANCE

MIL-DTL-38999 Series IV (and Glenair Series 234-105) offers outstanding interconnect performance for high shock and vibrate military and commercial applications.

- **Breech locking connectors with crimp contacts**
- **Electromagnetic compatibility (EMC):** metal-to-metal coupling, plug grounding fingers, and conductive shell finishes deliver excellent shielding performance up to 65 dB at 10 GHz. Grounding occurs before engagement of contacts.
- **Contact protection:** scoop-proof design prevents inadvertent damage to pin contacts during mating
- **Corrosion resistance:** connector shells are made from corrosion-resistant aluminum and are offered with cadmium or electroless nickel finish
- **Supported contacts:** from size #22D signal to #12 shielded Coax
- **Glenair COTS versions offer equivalent performance with material/finish options not available in QPL parts**

### SERIES IV HERMETICS



Glenair is also a DLA qualified manufacturer for D38999 Series IV Hermetic connectors in jam-nut, weld-mount, solder-mount, and box-mount receptacle designs.

Hermetic sealing: 10<sup>-7</sup> cc/second maximum helium leak rate



### DLA QPL CONNECTOR FINISH CLASSES



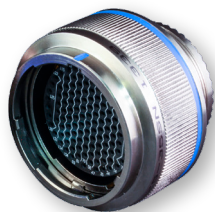
**Electroless Nickel**  
 Conductivity +++++  
 Corrosion Resistance ⓧⓧⓧⓧ  
 -65° to +200°C  
 Glenair Code **ME**  
 D38999 Class **F, G**



**Cadmium Olive Drab**  
 Conductivity +++++  
 Corrosion Resistance ⓧⓧⓧⓧ  
 -65° to +175°C  
 Glenair Code **NF**  
 D38999 Class **W**

Glenair COTS Series IV type connectors (234-105 series) offer material/finish options not included in the QPL spec, including Nickel-PTFE and black zinc-nickel. Consult factory for ordering information

### SUPPORTED CRIMP-CONTACT SHELL STYLES



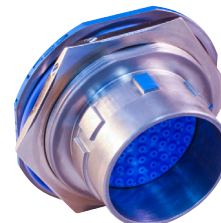
Plug



Wall-Mount Receptacle



Box-Mount Receptacle



Jam Nut Receptacle



In-Line Receptacle