



Glenair®



## QPL AND COTS EQUIVALENT MIL-DTL-38999 Series III

The industry standard mil/  
aero connector backed with  
Glenair service and availability

Standard environmental-class MIL-DTL-38999 Series III connectors with DLA certification are now manufactured and supplied by Glenair. These industry-standard connectors are ideally suited for the broad range of harsh environmental land, sea, air, and space applications and are backed with Glenair's industry leading service, support, and availability. Marked with D38999 or Glenair COTS part numbering, these environmental crimp-contact connectors are available in cable plug or mounted jam nut / square flange receptacle shell styles. All standard material and finish classes are supported including W (Cad/O.D. over Electroless Nickel), F (Electroless Nickel), T (Nickel-PTFE) and G (Space-Grade Electroless Nickel). Other RoHS-compliant finishes including Glenair ZR (Black Zinc-Nickel) are also available under Glenair commercial part numbers. Contact arrangements per MIL-STD-1560 and all standard and normal and alternate polarizations are fully supported. Best of all, defense and commercial aerospace customers, as well as land and marine engineers and procurement specialists may now specify these mission-critical interconnects directly from Glenair—the recognized service, support, and availability leader for the interconnect industry.

**DLA QPL MIL-DTL-38999  
SERIES III NOW AVAILABLE  
FROM GLENAIR**

- Qualified environmental plug, jam nut, and square flange receptacles
- All 1560 crimp-contact insert arrangements fully supported
- W, F, T and G plating classes, plus Glenair COTS equivalents
- A 100% made in America interconnect: No foreign-sourced materials, component parts, or assembly labor employed



*Glenair: Made in America since 1956*

# QPL AND COTS EQUIVALENT MIL-DTL-38999 Series III

Industry standard harsh environment connectors



## MECHANICAL, ENVIRONMENTAL, AND ELECTRICAL PERFORMANCE

MIL-DTL-38999 Series III (Glenair Series 233-105) offers outstanding interconnect performance for mission-critical military and commercial applications.

- **Electromagnetic compatibility (EMC):** metal-to-metal coupling, plug grounding fingers, and conductive shell finishes deliver excellent shielding performance up to 65 dB at 10 GHz
- **Contact protection:** scoop-proof design prevents inadvertent damage to pin contacts during mating
- **Environmental performance:** interfacial and wire grommet seals deliver IP67 level sealing, even at high altitude
- **Corrosion resistance:** connector shell finishes—from Cad over Nickel to Class T Nickel-PTFE offer outstanding corrosion resistance
- **Mating:** triple-start stub ACME threads provide fast mating and resist galling and cross-threading
- **Anti-Decoupling:** better-than-QPL vibration and shock performance
- **Supported contacts:** from size #22D signal to #12 shielded Coax
- **Advanced COTS versions:** high-performance series (Glenair SuperNine®) available for improved durability, ease of termination, EMI/RFI filtering and more

## CONNECTOR FINISH CLASSES



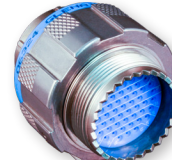
**Electroless Nickel**  
 Conductivity +++++  
 Corrosion Resistance ⌚⌚⌚⌚  
 -65° to +200°C  
 Glenair Code **ME**  
 D38999 Class **F**



**Space-Grade Electroless Nickel**  
 Conductivity +++++  
 Corrosion Resistance ⌚⌚⌚⌚  
 -65° to +200°C  
 Glenair Code **MA**  
 D38999 Class **G**



**Cadmium**  
 Conductivity +++++  
 Corrosion Resistance ⌚⌚⌚⌚⌚  
 -65° to +175°C  
 Glenair Code **NF**  
 D38999 Class **W**



**Nickel-PTFE**  
 Conductivity +++++  
 Corrosion Resistance ⌚⌚⌚⌚⌚  
 -65° to +175°C  
 Glenair Code **MT**  
 D38999 Class **T**

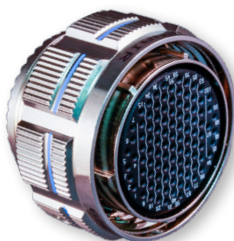


**Black Zinc Nickel**  
 Conductivity +++++  
 Corrosion Resistance ⌚⌚⌚⌚⌚  
 -65° to +175°C  
 Glenair Code **ZR**  
 D38999 Class **Z\***

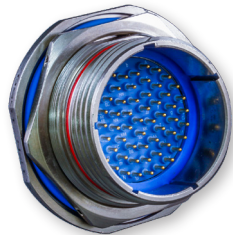


\*qualification pending

## SUPPORTED CRIMP-CONTACT SHELL STYLES



Plug



Jam Nut Receptacle



Square Flange Receptacle

### Mechanical Performance Features

Threaded Triple-Start Coupling Design
Nine Shell Sizes, Range 9 – 25
Scoop-Proof Shell Design
Full Mate Visual Indicator
Integrated Contact Retention System
Interfacial and Grommet Seals
Fully Shielded
Lightning Strike
Shell-to-Shell Bottoming
Threaded/Toothed Accessory Interface
Full Range of Assembly Tools