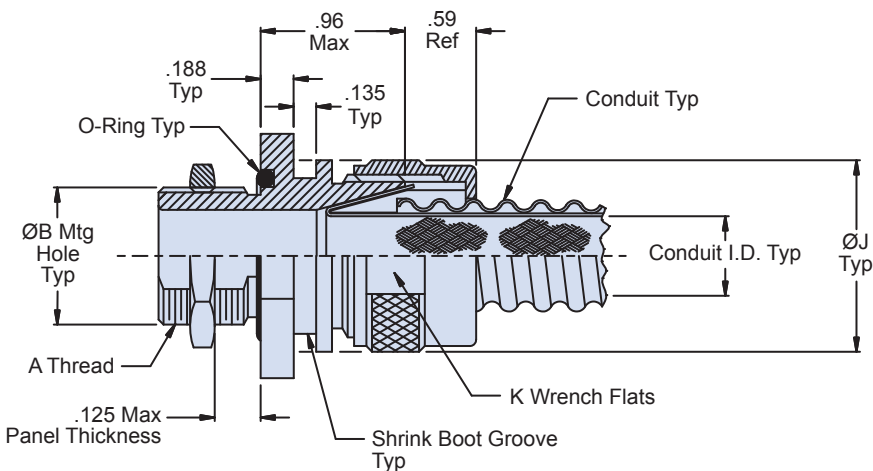
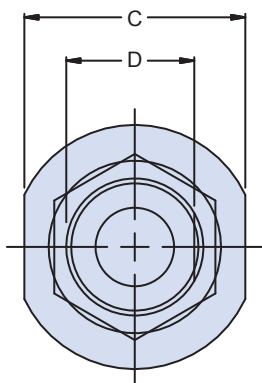
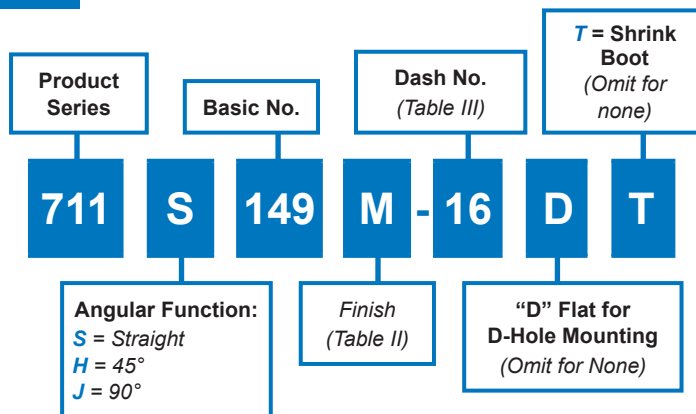




711-149
Internal Braid System
 Environmental Metal Bulkhead Fitting with
 Shrink Boot Groove for Series 74 Helical Convuluted Tubing

Internal braid convoluted tubing-to-bulkhead fitting with shrink boot groove, metal

How To Order



SYM S - Straight

Material/Finish

- Adapters, Elbows, Nuts, Hex Nuts & Ferrules: Table II (See P/N development)
- O-Ring: Silicone/NA
- Shrink Boot: See individual drawings

711-149
Internal Braid System
 Environmental Metal Bulkhead Fitting with
 Shrink Boot Groove for Series 74 Helical Convuluted Tubing

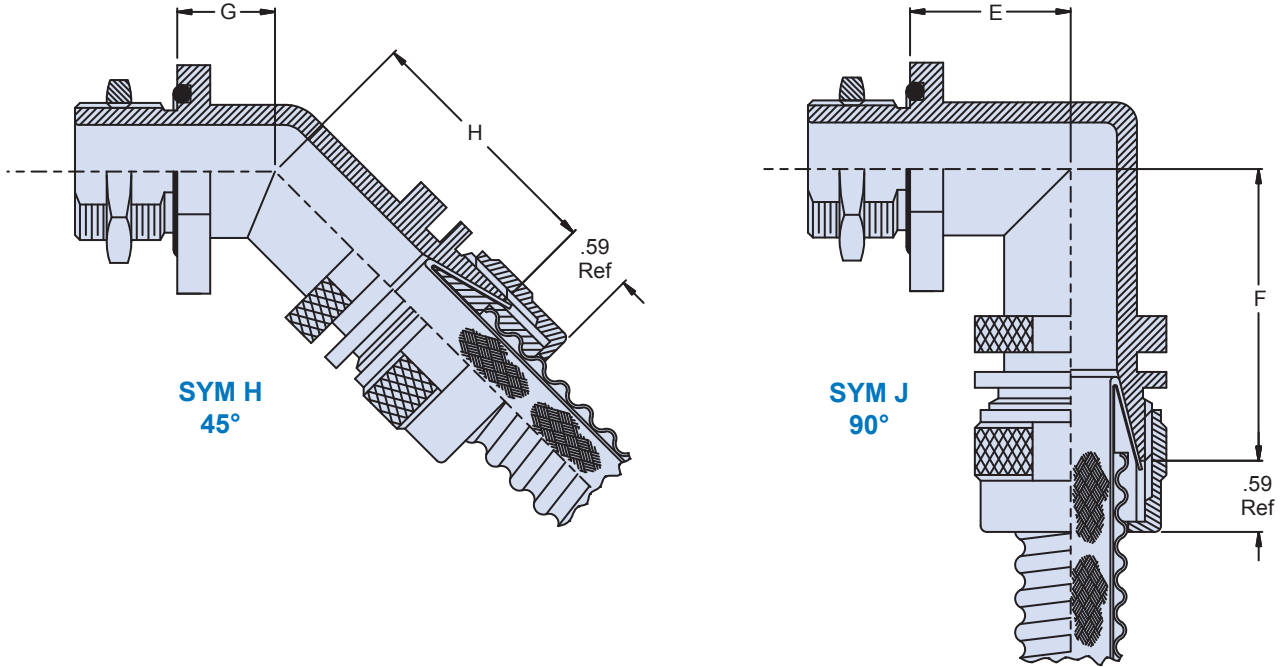


Table III: Dimensions and Shrink Boot

Dash No.	Conduit ID	A Thread Class 2A	Ø B +.015 -.000	C Flat	D +.000 -.015	E Max	F Max	G Max	H Max	Ø J	K Flat	Shrink Boot Part Number
06	See 121-195 Conduit Drawing	7/16-28 UNEF	.443 (11.3)	.937 (23.8)	.375 (9.50)	.846 (21.5)	1.75 (44.5)	.462 (11.7)	1.64 (41.7)	.94 (23.9)	.812 (20.6)	770-001S105
09		9/16-24 UNEF	.568 (14.4)	1.000 (25.4)	.500 (12.7)	.878 (22.3)	1.75 (44.5)	.475 (12.2)	1.64 (41.7)	1.00 (25.4)	.875 (22.2)	770-001S106
10		9/16-24 UNEF	.568 (14.4)	1.062 (27.9)	.500 (12.7)	.909 (23.1)	1.75 (44.5)	.488 (12.4)	1.64 (41.7)	1.06 (26.9)	.937 (23.8)	770-001S106
12		5/8-24 UNEF	.630 (16.0)	1.125 (28.7)	.563 (14.3)	.940 (23.9)	1.82 (46.2)	.500 (12.7)	1.67 (42.4)	1.13 (28.7)	1.000 (25.4)	770-001S106
14		11/16-24 UNEF	.693 (17.6)	1.187 (30.2)	.625 (15.9)	.972 (24.7)	1.82 (46.2)	.513 (13.0)	1.67 (42.4)	1.19 (30.2)	1.062 (27.1)	770-001S106
16		3/4-20 UNEF	.755 (19.2)	1.250 (31.8)	.688 (17.5)	1.003 (25.4)	1.82 (46.2)	.526 (13.5)	1.67 (42.4)	1.25 (31.8)	1.125 (28.7)	770-001S107
20		7/8-20 UNEF	.880 (22.4)	1.375 (35.1)	.812 (20.6)	1.065 (25.7)	1.88 (47.8)	.552 (14.0)	1.69 (42.9)	1.38 (35.1)	1.250 (31.8)	770-001S107
24		1-20 UNEF	1.005 (25.5)	1.500 (38.1)	.938 (23.8)	1.128 (28.7)	1.94 (49.3)	.578 (14.7)	1.72 (43.7)	1.56 (39.6)	1.437 (36.6)	770-001S108
28		13/16-18 UNEF	1.193 (30.3)	1.625 (41.4)	1.125 (28.6)	1.190 (30.2)	2.00 (50.8)	.604 (15.3)	1.75 (44.5)	1.69 (42.9)	1.562 (39.6)	770-001S108
32		15/16-18 UNEF	1.318 (33.5)	1.750 (44.5)	1.250 (31.8)	1.253 (31.8)	2.12 (53.8)	.630 (16.0)	1.80 (45.7)	1.88 (47.8)	1.750 (44.5)	770-001S108
40		11/2-18 UNEF	1.505 (38.2)	2.125 (54.1)	1.438 (36.5)	1.440 (36.5)	2.24 (57.0)	.708 (18.0)	1.84 (46.7)	2.13 (54.1)	2.000 (50.8)	770-001S108
48		13/4-18 UNS	1.755 (44.6)	2.437 (62.0)	1.688 (42.9)	1.596 (40.5)	2.31 (58.7)	.772 (19.6)	1.88 (47.8)	2.50 (63.5)	2.375 (60.5)	TBD
56		2-18 UNS	2.005 (51.1)	2.750 (69.6)	1.938 (49.3)	1.753 (44.5)	2.44 (62.0)	.837 (21.3)	1.93 (49.0)	2.75 (69.9)	2.625 (66.8)	TBD
64		2 1/4-16 UN	2.255 (57.4)	2.875 (73.2)	2.188 (55.6)	1.815 (46.2)	2.55 (64.8)	.863 (21.9)	1.97 (50.0)	3.00 (76.2)	2.875 (73.2)	TBD

Table II: Material/Finish

Sym	Material	Finish Description
M	Aluminum Alloy	Electroless Nickel
MT	Aluminum Alloy	Nickel-PTFE
NF	Aluminum Alloy	Cad/O.D. Over Electroless Nickel (1,000 Hour Salt Spray)
Z1	300 Series SST	Passivate
ZM	300 Series SST	Electroless Nickel
ZN	Aluminum Alloy	Zinc Nickel/O.D. Over Electroless Nickel (1,000 Hour Salt Spray)
ZW	300 Series SST	Cad O.D. Over Electroless Nickel