



10K PSI / 700 BAR / 7000M
**SuperG55™ High-Pressure,
 Dry-Mate Subsea Connectors**
 Super G55 Series connectors



G55 A1 ATTACHABLE CABLE CONNECTOR PLUG (CCP)



SuperG55™ - How To Order	
Sample Part Number	G55A1 -1508 -0000
Series	SuperG55™ = underwater dry-mate, long version (CCP), attachable
Shell Size/Insert Arrangement Size	See shell size / insert arrangements (page 38)
Overall Length	In feet (0000 = no cable, 0001 = one foot, etc.)
Potting Boot	PB = potting boot; omit for none. Not required if used for OFR1
Material Option	Omit for stainless steel PK = peek coupling nut and barrel B = brass coupling nut and barrel See material options on page 40

G55 01 STRAIGHT OVERMOLDED, CABLE PLUG (CCP)



SuperG55™ - How To Order	
Sample Part Number	G5501 -1508 -0004
Series	SuperG55™ = underwater dry-mate, straight overmolded CCP
Shell Size/Insert Arrangement	See shell size / insert arrangements (page 38)
Cable Length	In feet (0001 = one foot, 0002 = two feet etc.)
Inch Increments	3, 6 or 9 inches; omit for whole feet lengths
Material Option	Omit for stainless steel PK = peek coupling nut and barrel B = brass coupling nut and barrel See material options on page 40
Back-to-Back	B2B = back-to-back; omit if not required

G55 R1 RIGHT ANGLE OVERMOLDED, CABLE CONNECTOR PLUG (CCP)



SuperG55™ - How To Order	
Sample Part Number	G55R1 -1508 -0004
Series	SuperG55™ = underwater dry-mate, right angle overmolded CCP
Shell Size/Insert Arrangement	See shell size / insert arrangements (page 38)
Cable Length	In feet (0001 = one foot, 0002 = two feet etc.)
Inch Increments	3, 6 or 9 inches; omit for whole feet lengths
Material Option	Omit for stainless steel PK = peek coupling nut and barrel B = brass coupling nut and barrel See material options on page 40
Back-to-Back	B2B = back-to-back; omit if not required



10K PSI / 700 BAR / 7000M
**SuperG55™ High-Pressure,
 Dry-Mate Subsea Connectors**
 Super G55 Series connectors



G55 OF1 STRAIGHT OIL-FILLED CABLE CONNECTOR PLUG (CCP)



SuperG55™ - How To Order				
Sample Part Number	G55OF1	-1508	-0010	
Series	SuperG55™ = Underwater dry-mate, straight oil-filled CCP			
Shell Size/Insert Arrangement	See shell size / insert arrangements (page 40)			
Overall Length	In feet (0000 = no cable, no hose 0001 = one foot, etc.)			
Back-to-Back*	B2B = back-to-back (min. 7ft hose length); omit if not required			

*Consult factory for additional back-to-back options

G55 OFR1 RIGHT ANGLE OIL-FILLED CABLE CONNECTOR PLUG (CCP)



SuperG55™ - How To Order				
Sample Part Number	G55OFR1	-1508	-0010	
Series	SuperG55™ = Underwater dry-mate, right angle oil-filled CCP			
Shell Size/Insert Arrangement	See shell size / insert arrangements (page 40)			
Overall Length	In feet (0000 = no cable, no hose 0001 = one foot, etc.)			
Back-to-Back*	B2B = back-to-back (min. 7ft hose length); omit if not required			

*Consult factory for additional back-to-back options

G55 06 FLANGE CONNECTOR RECEPTACLE (FCR)



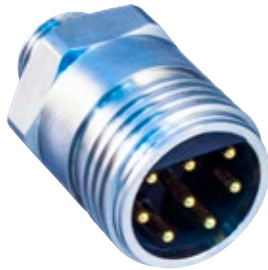
SuperG55™ - How To Order				
Sample Part Number	G5506	-2013	-0004	
Series	SuperG55™ = underwater dry-mate, flange connector receptacle (FCR)			
Shell Size/Insert Arrangement	See shell size / insert arrangements (page 40)			
Cable Length	In feet (0001 = 1 foot, 0004 = 4 feet, standard length)			
Material Option	Omit for stainless steel B = brass coupling nut and barrel	PK = peek coupling nut and barrel See material options on page 37		



10K PSI / 700 BAR / 7000M
**SuperG55™ High-Pressure,
 Dry-Mate Subsea Connectors**
 Super G55 Series connectors



G55 07 BULKHEAD CONNECTOR RECEPTACLE (BCR)



SuperG55™ - How To Order				
Sample Part Number	G5507	-1508	-0004	
Series	SuperG55™ = underwater dry-mate, bulkhead connector receptacle (BCR)			
Shell Size/Insert Arrangement	See shell size / insert arrangements (page 38)			
Cable Length	In feet (0001 = 1 foot, 0004 = 4 feet, standard length)			
Material Option	Omit for stainless steel B = brass coupling nut and barrel		PK = peek coupling nut and barrel See material options on page 40	

G55 A2 ATTACHABLE CABLE CONNECTOR RECEPTACLE (CCR)



SuperG55™ - How To Order				
Sample Part Number	G55A2	-1508	-0000	
Series	SuperG55™ = underwater dry-mate, attachable cable connector receptacle (CCR)			
Shell Size/Insert Arrangement	See shell size / insert arrangements (page 38)			
Cable Length	In feet (0000 = no cable, 0001 = one foot, etc.)			
Material Option	Omit for stainless steel B = brass coupling nut and barrel		PK = peek coupling nut and barrel See material options on page 40	

*Currently only 1504, 1506, 1508, 2013, 2021 & 2420 insert arrangements are available.

G55 02 STRAIGHT OVERMOLDED CABLE CONNECTOR RECEPTACLE (CCR)



SuperG55™ - How To Order					
Sample Part Number	G5502	-1508	-0004		
Series	SuperG55™ = underwater dry-mate, straight overmolded CCR				
Shell Size/Insert Arrangement	See shell size / insert arrangements (page 38)				
Cable Length	In feet (0001 = one foot, 0002 = two feet etc.)				
Inch Increments	3, 6 or 9 inches; omit for whole feet lengths				
Material Option	Omit for stainless steel B = brass coupling nut and barrel		PK = peek coupling nut and barrel See material options on page 40		
Back-to-Back	B2B = back-to-back; omit if not required				



10K PSI / 700 BAR / 7000M
**SuperG55™ High-Pressure,
 Dry-Mate Subsea Connectors**
 Super G55 Series connectors



G55 R2 RIGHT ANGLE OVERMOLDED CABLE CONNECTOR RECEPTACLE (CCR)



SuperG55™ - How To Order				
Sample Part Number	G55R2	-1508	-0004	
Series	SuperG55™ = underwater dry-mate, right angle overmolded CCR			
Shell Size/Insert Arrangement	See shell size / insert arrangements (page 40)			
Cable Length	In feet (0001 = one foot, 0002 = two feet etc.)			
Inch Increments	3, 6 or 9 inches; omit for whole feet lengths			
Material Option	Omit for stainless steel B = brass coupling nut and barrel		PK = peek coupling nut and barrel See material options on page 37	
Back-to-Back	B2B = back-to-back; omit if not required			

G55 OF2 STRAIGHT OIL-FILLED CABLE CONNECTOR RECEPTACLE (CCR)



SuperG55™ - How To Order				
Sample Part Number	G55OF2	-1508	-0010	
Series	SuperG55™ = Underwater dry-mate, straight oil-filled CCR			
Shell Size/Insert Arrangement*	See shell size / insert arrangements (page 40)			
Overall Length	In feet (0000 = no cable, no hose, 0001 = one foot, etc.)			
Back-to-Back**	B2B = back-to-back (min. 7ft hose length); omit if not required			

*Currently only 1504, 1506, 1508, 2013, 2021, and 2420 insert arrangements are available
 **Consult factory for additional back-to-back options

G55 OFR2 RIGHT ANGLE OIL-FILLED CABLE CONNECTOR RECEPTACLE (CCR)



SuperG55™ - How To Order				
Sample Part Number	G55OFR2	-1508	-0010	
Series	SuperG55™ = Underwater dry-mate, right angle oil-filled CCR			
Shell Size/Insert Arrangement*	See shell size / insert arrangements (page 40)			
Overall Length	In feet (0000 = no cable, no hose, 0001 = one foot, etc.)			
Back-to-Back*	B2B = back-to-back (min. 7ft hose length); omit if not required			

*Currently only 1504, 1506, 1508, 2013, 2021, and 2420 insert arrangements are available
 **Consult factory for additional back-to-back options



10K PSI / 700 BAR / 7000M
**SuperG55™ High-Pressure,
 Dry-Mate Subsea Connectors**
 Super G55 Series connectors

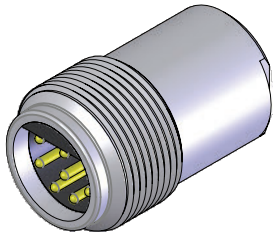


G55 D1 DUMMY SEALING PLUG (DSP)



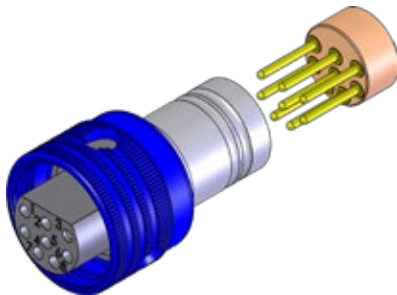
SuperG55™ - How To Order				
Sample Part Number	G55D1	-1508	-0000	
Series	SuperG55™ = dummy sealing plug (DSP)			
Shell Size/Insert Arrangement	See shell size / insert arrangements (page 38)			
Cable Length	0000 = no cable			
Material Option	Omit for stainless steel B = brass coupling nut and barrel		PK = peek coupling nut and barrel See material options on page 40	

G55 D2 DUMMY SEALING RECEPTACLE (DSR)



SuperG55™ - How To Order				
Sample Part Number	G55D2	-1508	-0000	
Series	SuperG55™ = dummy sealing receptacle (DSR)			
Shell Size/Insert Arrangement	See shell size / insert arrangements (page 38)			
Cable Length	0000 = no cable			
Material Option	Omit for stainless steel B = brass coupling nut and barrel		PK = peek coupling nut and barrel See material options on page 40	

G55 M1 SOCKET TO SOCKET (CCP)



SuperG55™ - How To Order				
Sample Part Number	G55M1	-1508	-0001	
Series	SuperG55™ = underwater dry-mate, back-to-back socket CCP			
Shell Size/Insert Arrangement	See shell size / insert arrangements (page 38)			
Cable Length	In feet (0000 = no cable, 0001 = one foot, etc.)			
Material Option	Omit for stainless steel B = brass coupling nut and barrel		PK = peek coupling nut and barrel See material options on page 40	



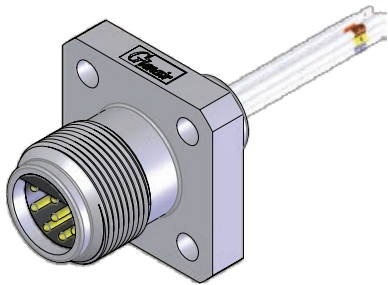
10K PSI / 700 BAR / 7000M

SuperG55™ High-Pressure, Dry-Mate Subsea Connectors



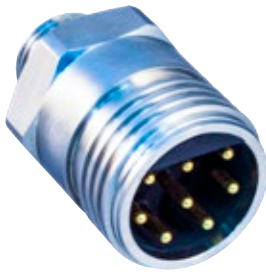
Super G55 Series custom connectors

G55 06 FLANGE CONNECTOR RECEPTACLE (FCR) WITH EARTH LEAD



SuperG55™ - How To Order					
Sample Part Number	G5506	-1508	-0004	-EL	
Series	SuperG55™ = underwater dry-mate, FCR with earth lead				
Shell Size/Insert Arrangement	See shell size / insert arrangements (page 40)				
Cable Length	In feet (0001 = 1 foot, 0004 = 4 feet, standard length)				
Earth Lead	EL = earth lead (ground)				
Material Option	T = titanium; omit for stainless steel				

G55 07 BULKHEAD CONNECTOR RECEPTACLE (BCR) WITH EARTH LEAD



SuperG55™ - How To Order					
Sample Part Number	G5507	-1508	-0004	-EL	
Series	SuperG55™ = underwater dry-mate, BCR with earth lead				
Shell Size/Insert Arrangement	See shell size / insert arrangements (page 40)				
Cable Length	In feet (0001 = 1 foot, 0004 = 4 feet, standard length)				
Earthing Lead	EL = earth lead (ground)				
Material Option	T = titanium; omit for stainless steel				

G55 061F FLANGE CONNECTOR RECEPTACLE (FCR) WITH INDEXABLE FLANGE



SuperG55™ - How To Order					
Sample Part Number	G55061F	-1508	-0004		
Series	SuperG55™ = underwater dry-mate, flange connector receptacle (FCR) with indexable flange				
Shell Size/Insert Arrangement	See shell size / insert arrangements (page 40)				
Cable Length	In feet (0001 = 1 foot, 0004 = 4 feet, standard length)				
Material Option	Omit for stainless steel B = brass coupling nut and barrel		PK = peek coupling nut and barrel See material options on page 37		

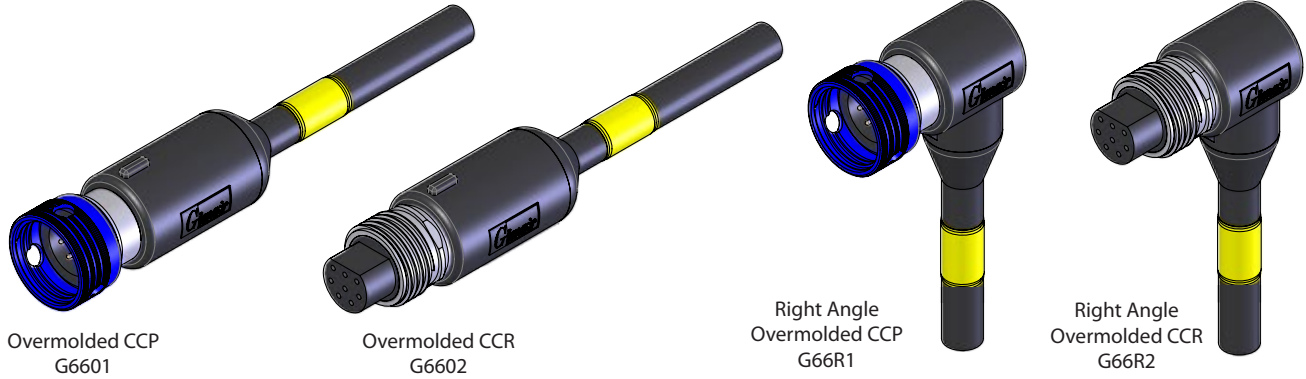


10K PSI / 700 BAR / 7000M SuperG66™ High-Pressure, Dry-Mate Subsea Connectors

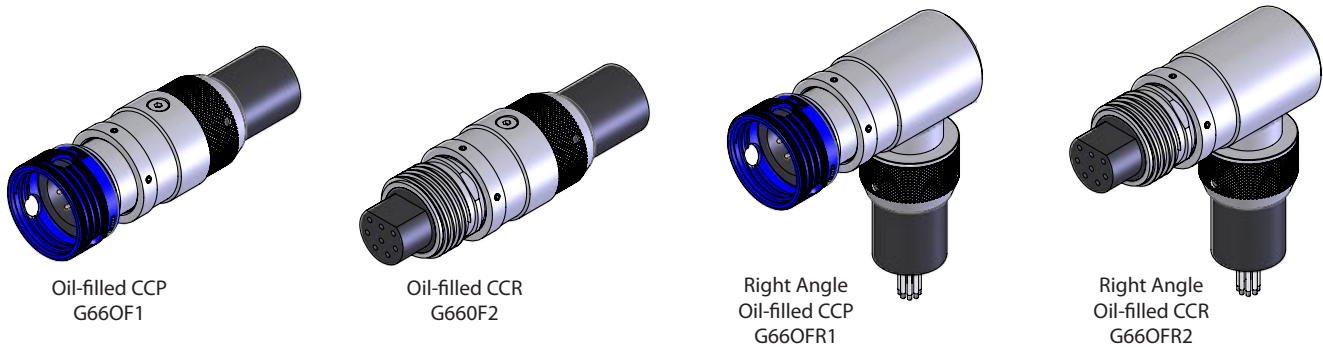


Super G66 reverse-gender connectors

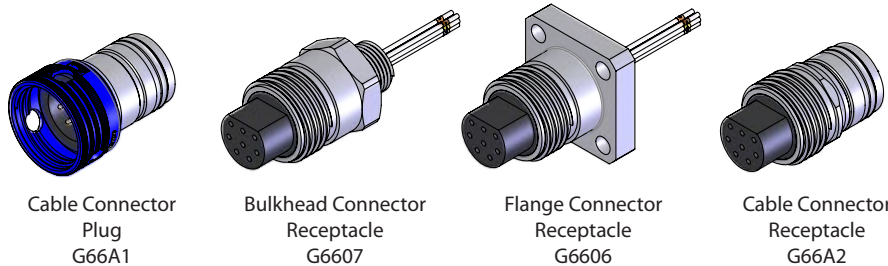
G66 OVERMOLDED CABLE CONNECTOR PLUGS AND RECEPTACLES



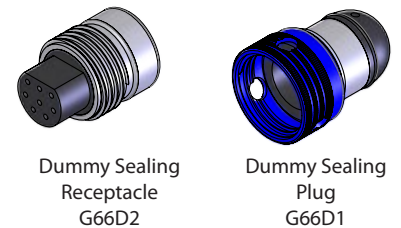
G66 OIL-FILLED CABLE CONNECTOR PLUGS AND RECEPTACLES



G66 CABLE CONNECTOR PLUGS AND BULKHEAD, FLANGE AND CABLE CONNECTOR RECEPTACLES

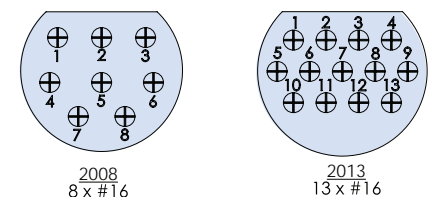


DUMMY SEALING PLUG AND RECEPTACLE



COMING SOON: SuperG66™ - Consult factory for availability				
Sample Part Number	G66A1	-2008	-0000	
Series	SuperG66™ = underwater dry-mate, cable connector plug (CCP)			
Shell Size/Insert Arrangement	See shell size / insert arrangements (page 38)			
Cable Length	0000 = no cable; also available in specified lengths for test purposes			
Material Option	Omit for stainless steel PK = peek coupling nut and barrel B = brass coupling nut and barrel Reference material options on page 40			
Potting Boot	PB = potting boot; omit if not required. Not required if changed to OFR1			

INSERT ARRANGEMENTS



Additional insert arrangements can be engineered, contact factory