



MICRO-PSI Maintenance Instruction Card

707-0264-1 Cable Connector Plug (CCP)

707-0264-5 Cable Connector Receptacle (CCR)

707-0264-6 Flange Connector Receptacle (FCR)

707-0264-7 Bulkhead Connector Receptacle (BCR)

Contact Us: Glenair Inc.

1211 Air Way

Glendale, CA 91201

Phone: (818) 247-6000

Email: sales@glenair.com

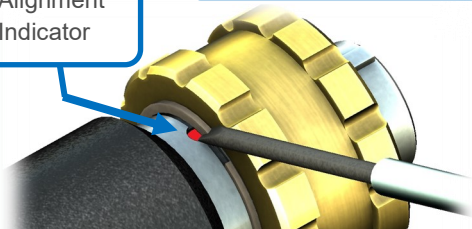
Web: www.glenair.com




Refer to 709-083 for Micro-psi shell sizes and contact patterns. See sales drawing for connector specifications and mounting dimensions.

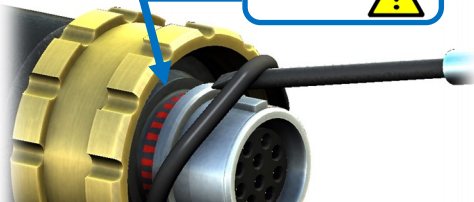
O-ring Replacement Guide for Plugs


Alignment Indicator



1. Unseat retaining ring from groove using a suitable tool (precision screwdriver shown)


Critical Sealing Surface 



3. Remove old o-ring **CAUTION:** do not damage o-ring sealing surface (shown) 

New O-ring




LUBRICATE ALL O-RINGS:
LIGHTLY WET ENTIRE SURFACE
WITH PARKER O-LUBE
OR EQUIVALENT

2. Retract retaining ring and coupling ring

4. Lubricate and install new o-ring, return coupling ring and retaining ring to groove.

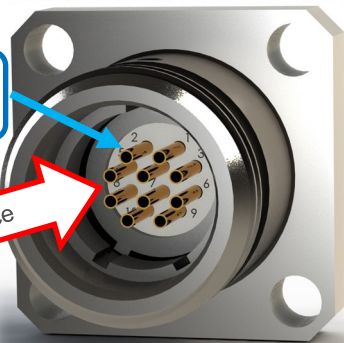
Document Part Number:
990-70409 Rev A

Receptacle Insert Cleaning



Micro-contacts

Glass face



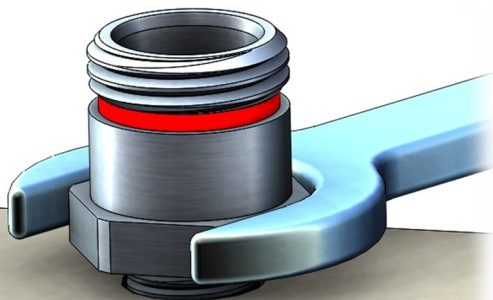
If it becomes necessary to clean the front face of the glass insulator of the receptacle, use the following recommendations:

1. Low-pressure steam clean
2. Rinse with IPA and dry

CAUTION: do not damage the micro-contacts

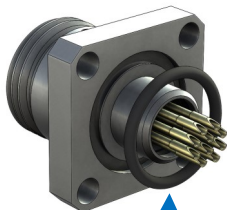


Recommended BCR Torque



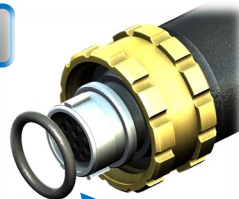
SHELL SIZE	BCR MAX INSTALL TORQUE (in-lbs)
ME	83
MG	150
MK	175

Replacement O-ring Part Numbers



Receptacle Face Seal

SHELL SIZE	FCR and BCR Face Seal O-ring	Plug Bore Seal O-ring
ME	990-70336-712	990-70336-151
MG	990-70338-058	990-70338-712
MK	990-70135-014	990-70337-4



Plug Bore Seal