

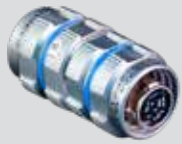
MIL-DTL-38999 Series III Type High Durability Connectors

Product selection guide

<p>SuperNine® Features B-3 Material/finish and Panel Cut-out Dimensions B-4 Performance Summary and Specifications B-5</p>	 <p>233-216 B-30 Lanyard-Release Connectors Quick-release lanyard plug with EMI ground spring</p>
 <p>233-205 B-8 Crimp Contact Plug and Receptacle Connectors Jam nut, square flange, and in-line with accessory threads</p>	 <p>233-207 Flush Flange PCB Receptacles Wall mount, slotted holes B-32 Wall mount, helicoils B-33 Jam-nut mount B-34</p>
 <p>233-206 B-12 Crimp Contact Plug and Receptacle Connectors Jam nut, square flange, and in-line with boot groove and banding porch</p>	 <p>233-208 Stepped-Contact PCB Receptacles Wall mount B-36 Jam-nut mount B-38</p>
 <p>233-221 B-16 COBRA Crimp Contact Wire Harness Connector Right angle 'Cobra' connector with integral banding porch</p>	 <p>233-209 Sealed 1 x 10⁻⁴ PCB Receptacle with Washout Standoffs Wall mount B-40 Jam-nut B-42</p>
 <p>233-215 B-18 1K PSI Piston Sealed, Crimp Contact Connectors Boot groove, banding platform or accessory thread options</p>	 <p>233-210 Threaded-Standoff PCB Receptacles Wall mount B-44 Jam-nut B-46</p>
 <p>233PS215 B-22 Panel-Sealed Wall Mount Receptacle Dual O-ring panel sealed connector (for use with 233-215 plug)</p>	 <p>233-211 Dual-Flange Threaded-Standoff PCB Receptacles Wall mount B-48 Jam-nut B-50</p>
 <p>233-274 B-24 1K PSI crimp-contact piston-sealed connectors Meets fuel resistant MIL-F-8615 testing and explosion proof test MIL-STD-810, Method 511.7</p>	 <p>Sav-Con® B-52 Connector Savers Overview</p>
 <p>253-393 B-29 64 MB, 128 MB, and 256 MB USB Memory Stick USB 2.0 memory stick</p>	 <p>233-213 Connector Saver, In-line B-54 Pin/pin and socket/socket contact options available.</p>

MIL-DTL-38999 Series III Type Product selection guide

ENVIRONMENTAL CONNECTORS



233-214 B-55
In-line Connector Saver
Plug-to-plug independent alternate polarizations. Pin/pin and socket/socket contact options available.



233-212 and 233-212-07
Bulkhead Feed-thru
Wall mount B-56
Jam-nut mount B-57

SuperNine® Pulse Width Modulation (PWM)

Clean Sky Power Connector Features B-60
Performance Specifications B-61
Contacts B-64
Crimp Tools B-65
TurboFlex® Aerospace-Grade Power Cable B-66



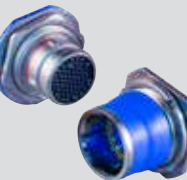
233-230-G6
PWM High-Voltage Connectors
In-line Plug B-62



233-230-00
PWM High-Voltage Connectors
Square Flange, Receptacle B-63



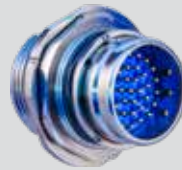
Space-Grade Blind-Mate Connectors
Outgassing and Screening Guidelines B-68
Blind-Mate Features B-70



253-014 Blind-Mate Plug B-72
Fixed mount jam-nut with roll-off nose and accessory threads
253-015 Blind-Mate Rcpt B-73
Jam-nut mount; misalignment accommodation and optional sealing



253-016 Blind-Mate Plug B-74
Fixed-mount plug, spring assist
253-017 Blind-Mate Rcpt B-75
Float mount receptacle with adjustable separation force



253-018 B-76
Blind-Mate Bulkhead Feed Thru
Jam-nut, blind-mate plug (A side) and 38999-type receptacle or plug mating interface (B side), with kick-off spring



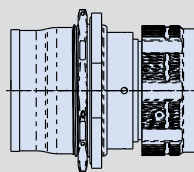
253-019 B-78
Blind-Mate Receptacle
Floating jam-nut mount with misalignment accommodation and optional sealing.



253-031 B-80
Blind-Mate Plug, with Assisted Separation Waveform Springs
Fixed jam-nut mount with kick-off spring and accessory threads.



253-032 B-82
Blind-Mate Receptacle
Floating jam-nut mount with misalignment accommodation and optional sealing. Mates with 253-031



253-033 B-84
Blind-Mate Bulkhead Feed-Thru
Floating jam-nut mount receptacle (side A) and 38999 type plug mating interface (side B) with misalignment accommodation



253-025
Locking Circuit and Test Mate Receptacle Connector
Mates with 253-016 plug B-86