



# REVERSE-BAYONET Super ITS-MB Seacrow™ Marine Bronze Connectors



## Shell Style, Class, and Accessory Options

### Receptacles

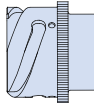
#### ITS 00

Front Panel Mount,  
Wall Mount Receptacle



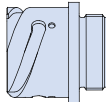
#### ITS 01

In Line Receptacle



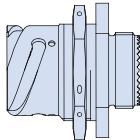
#### ITS 030

Rear Panel Mount,  
Wall Mount Receptacle



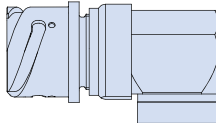
#### ITB 070

Rear Panel Mount,  
Jam-Nut Receptacle



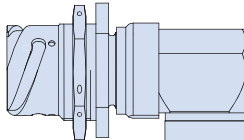
#### ITB 038

90° Rear Panel Mount,  
Wall Mount Receptacle



#### ITB 078

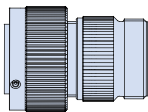
90° Rear Panel Mount,  
Jam-Nut Receptacle



### Plugs

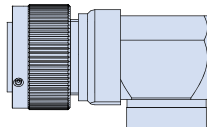
#### ITS 06

ITS Plug



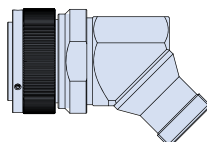
#### ITS 08GS

ITS 90° Plug



#### ITS 045

ITS 45° Plug



### Class Types

Environmental Backshells with  
Wire Sealing Grommet

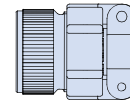
#### R

Environmental Adapter with  
wire sealing grommet



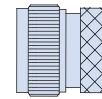
#### F

Environmental Adapter and Wire Sealing  
Grommet with Cable Clamp Backshell  
and Bushing for Jacketed Cable



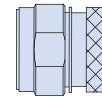
#### G

Environmental Backshell  
and Wire Sealing Grommet with  
Shrink Boot Groove



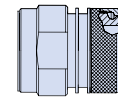
#### GR

Environmental Adapter  
and Wire Sealing Grommet with  
Rotatable Coupling Nut  
and Shrink Boot Groove



#### SP

Environmental Adapter and Wire Sealing  
Grommet with EMI/RFI Cable Shield  
Termination and Shrink Boot Groove



#### RS

Environmental Lipped Backshell  
with Wire Sealing Grommet and Potting Well



SUPER ITS: HARSH ENVIRONMENT

A



# REVERSE-BAYONET Super ITS-MB Seacrow™ Marine Bronze Connectors

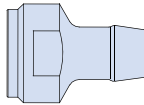


## Shell Style, Class, and Accessory Options

### Backshell Accessories

#### BR

Threaded Backshell for Termination of UNI 4883 Rubber Conduit



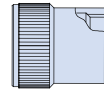
#### PG

Thread Backshell for PG Cable Glands; adapter not required



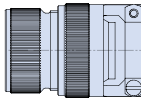
#### FM

Metric Thread Backshell for Metric Cable Glands; adapter not required



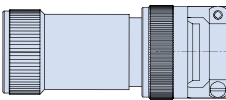
#### N5

Environmental Class C, Cable Clamp Backshell for Jacketed Cables



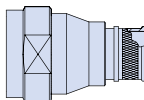
#### N2N5

Environmental Class C, Cable Clamp Backshell and Long Adapter Included



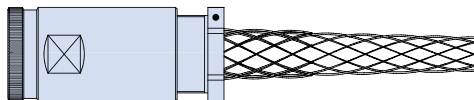
#### ZL/ZLF

Non-Environmental; EMI/RFI Backshell with Cable Shield Termination Banding Porch; ZLF includes band



#### KG

Kellems Grip Backshell



#### NO

Connector only; no backshell

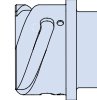
#### NOG

Connector with grommet and compression ring; no backshell

### Panel Mount Connectors without Accessory Threads

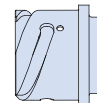
#### ITB 02

Front Panel Mount, Box Mount Receptacle



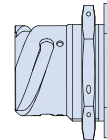
#### ITB 03

Rear Panel Mount, Box Mount Receptacle



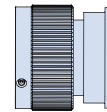
#### ITB 07

Rear Panel Mount Box Mount Jam-Nut Receptacle



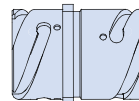
#### ITB 26

Panel Mounting Plug



#### ITB 02 PP

Solid Contact Bulkhead Feed Through



SUPER ITS: HARSH ENVIRONMENT

A