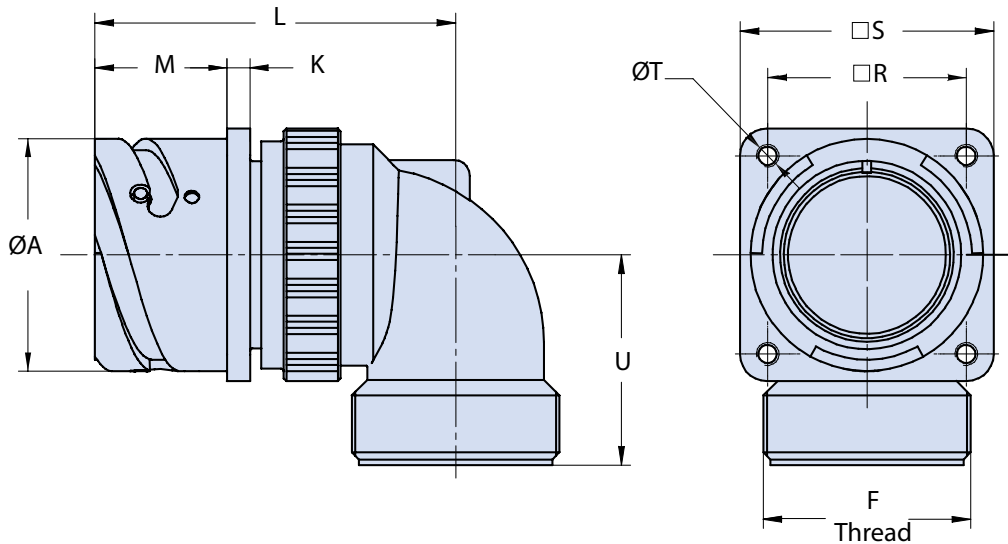
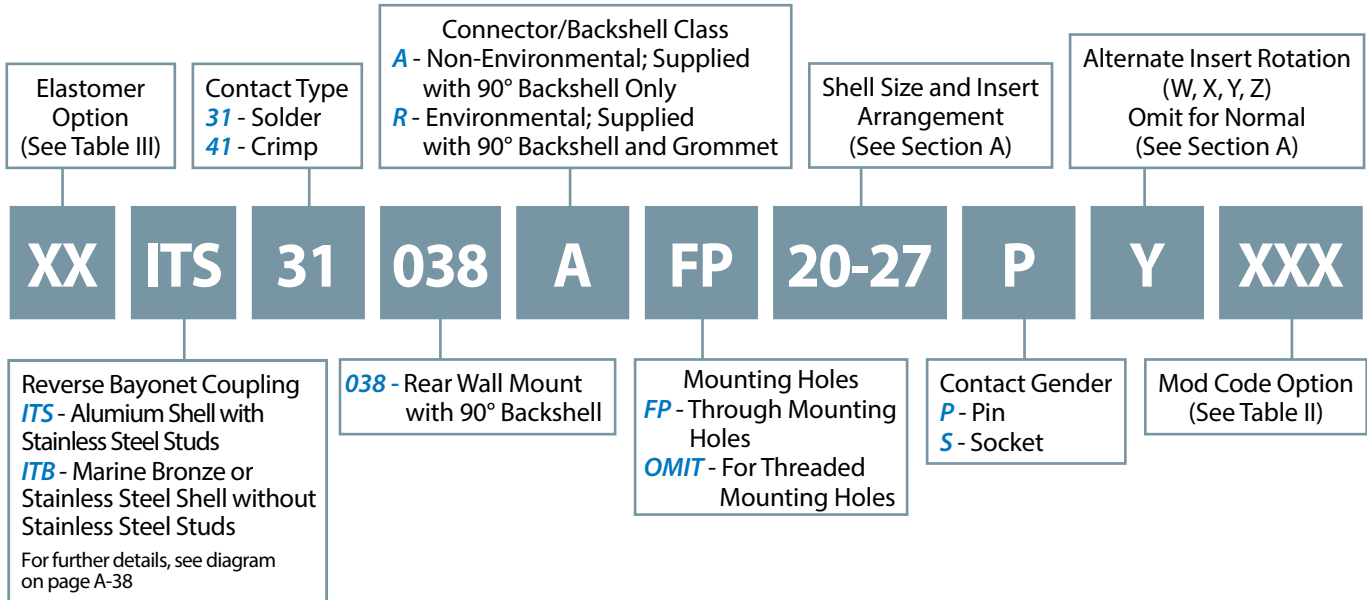


ITS 31038 A and ITS 31038 R
ITS 41038 A and ITS 41038 R
Rear Panel Mount Square Flange Receptacle Assembly
with 90° Backshell for the Attachment of Additional Accessories



Application Notes

1. Rear panel mount square flange receptacle with 90° backshell. Threaded mounting holes. Optional non-threaded mounting holes available.
2. Connector/Backshell Class "A" (non-environmental)—Not supplied with wire sealing grommet; Class "R" (environmental)—Supplied with 90° grommet.
3. Standard materials configuration consists of aluminum alloy. For platings, see TABLE II finish options.
4. Standard contact material consists of copper alloy with silver plating or gold plating.
5. A broad range of additional connector accessories are available. See our website and/or contact the factory for complete information.
6. Order cable clamps separately.

**ITS 31038 A and ITS 31038 R
ITS 41038 A and ITS 41038 R**
Rear Panel Mount Square Flange Receptacle Assembly
with 90° Backshell for the Attachment of Additional Accessories



TABLE I: DIMENSIONS

Shell Size	ØA +0.2 -0.1	F Thread	K ±0.2	L Max.	U ±0.2	M +0.2 -0	R ±0.2	S ±0.2	T Thread
10 SL	18.2	0.6250 - 24UNEF	2.8	48	25.0	18.4	18.25	25.4	M4
14 S	24.5	0.7500 - 20UNEF	3.2	50	26.5	18.4	23.00	30.4	M4
16 S	27.2	0.8750 - 20UNEF	3.2	53	27.0	18.4	24.60	32.5	M4
16	27.2	0.8750 - 20UNEF	3.2	60	27.0	23.2	24.60	32.5	M4
18	30.7	1.0000 - 20UNEF	4.0	61	30.0	23.2	27.00	35.0	M4
20	34.0	1.1875 - 18UNEF	4.0	69	32.0	23.2	29.40	38.0	M4
22	37.3	1.1875 - 18UNEF	4.0	69	32.0	23.2	31.75	41.0	M4
24	40.9	1.4375 - 18UNEF	4.0	71	37.0	23.2	34.90	44.5	M4
28	46.7	1.4375 - 18UNEF	4.0	73	38.0	24.2	39.70	50.9	M5
32	53.4	1.7500 - 18UNS	4.0	77	45.5	24.2	44.50	57.0	M5
36	59.6	2.0000 - 18UNS	4.0	80	47.2	24.2	49.20	63.5	M5
40	65.5	2.2500 - 16UN	4.0	83	52.0	24.2	55.55	69.9	M5

For through mounting holes refer to page B-3.

TABLE II: MODIFICATION CODES

CONTACT OPTIONS		
Sym	Description	
B0	Connector without Contacts**	
B1	Connector with Gold Plated Contacts	
Omit for standard version (Silver plated)		
STANDARD MATERIAL AND FINISH (*)		
Sym	Description	RoHS
	Omit for Aluminum/ Cadmium Olive Drab	
F6	Aluminum/ Black Electrodeposited Paint	✓
F7	Aluminum/ Black Zinc Nickel	✓
F11	Aluminum/ Electroless Nickel	✓
MB	Marine Bronze/ Unplated	✓
FK	Stainless Steel/ Passivate	✓

(*) For further options, please contact the factory.

(**) Crimp Contacts Only

TABLE III

ELASTOMER OPTIONS	
Sym	Description
	Omit for Polychloroprene Elastomer
FR	Fire Resistant Elastomer
S	Silicone Elastomer

B