

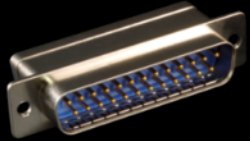
The widest range of
mission-critical interconnect
technologies in the world



**HiPer-D High-Performance M24308 Type
D-Subminiature Connectors and Accessories**

Rectangular Connector Series Summary

HiPer-D



Glenair Sr. 28

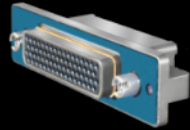
M24308

5 - 40 AMPs

31 Layouts

9-104 Ways

Micro-Crimp



Glenair Sr. 79

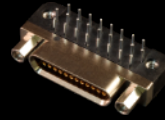
N/A

5-23 AMP

33 Layouts

2-102 Ways

Micro-D



Glenair Sr. 17

M83513

3 AMP

8 Layouts

9-100 Ways

AlphaLink



Glenair Sr. 171

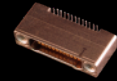
N/A

2 AMP

12 Layouts

4-40 Ways

Nano



Glenair Sr. 89

M32139

1 AMP

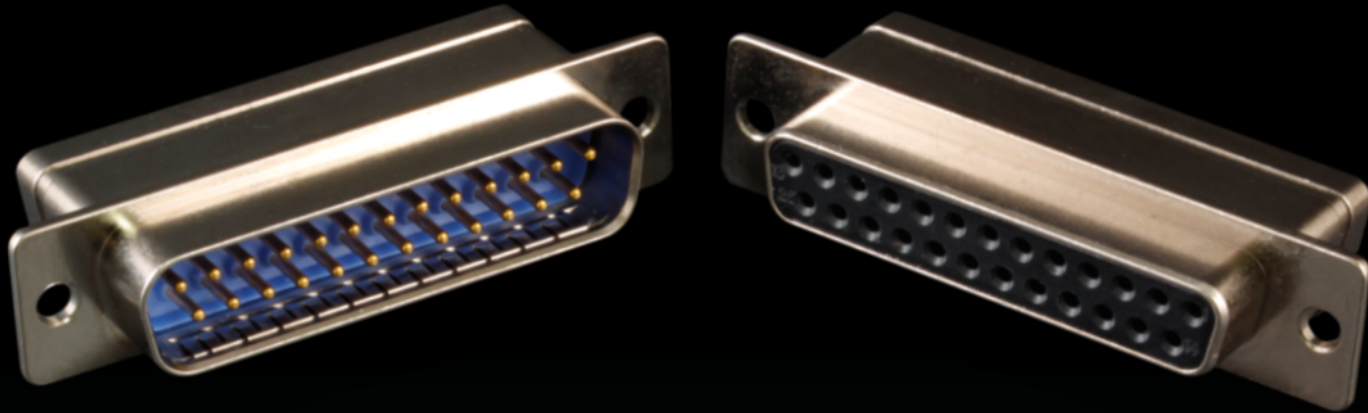
7 Layouts

9-85 Ways



HiPer-D: The Advanced Performance D-Sub Intermateable with MIL-DTL-24308

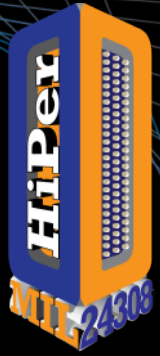
Precision-machined, sealed and shielded
for extreme duty D-sub applications



Glenair HiPer-D High-Performance D-Sub

Solves all the weaknesses found in standard MS D-Subs:

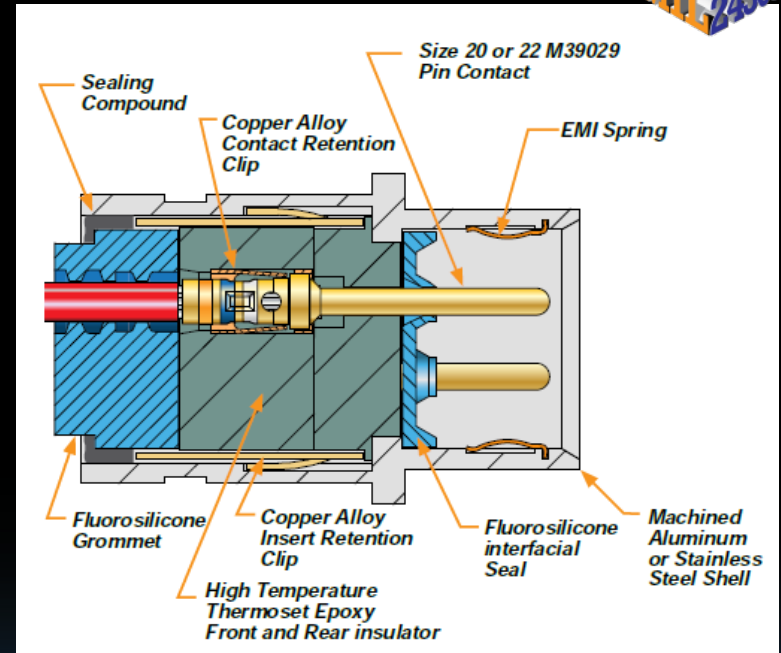
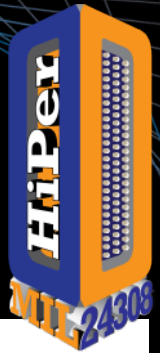
- Poor shell-to-shell conductivity
- Lack of insert retention
- No interfacial seal
- No grommet
- Lackluster EMI dimples



HiPer-D High-Performance M24308

Materials and construction

- Precision machined aluminum shell
- Thermoset epoxy insulators
- Sealing at front and rear
- Electroless Nickel plated EMI spring fingers



HiPer-D High-Performance D-Sub vs. MIL-STD-24308



Specification / Feature	M24308	HiPer-D
Temperature	-55°C to +125°C	-65°C to +200°C
Insulator	Thermoplastic	Thermoset Epoxy
Shell	Steel (Brass)	Aluminum (SST)
Voltage	1000 VAC	1000 VAC
Grounding	Dimples in shell (not in Mil-Spec)	Nickel-plated BeCu EMI spring
Environmental	No	Yes
Vibration, sine	20 g	60 g
Vibration, random	N/A	43 g
Shock	50 g	300 g
Bolt-on backshells	No	Yes

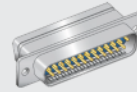
Sr. 28 HiPer-D Product Family

- Inline cable connectors
- Rear panel mount
- Float mount
- Integral banding platform
- Straight and right angle PC tail



Crimp Termination - for Attaching Wires

Inline



280-018
Page B-6



280-019 Socket
Page B-8

Rear Panel Mount

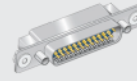


280-020 Pin
Page B-10



280-021 Socket
Page B-12

Float Mount



280-030 Pin
Page B-14



280-031 Socket
Page B-16

Integral Banding Platform



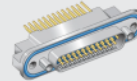
280-086 Pin
Page B-18



280-087 Socket
Page B-20

PC Board - with Panel O-Ring

Straight PCB

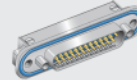


280-022 Pin
Page B-22

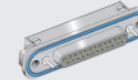


280-023 Socket
Page B-24

Right Angle PCB



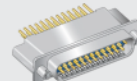
280-024 Pin
Page B-26



280-025 Socket
Page B-28

PC Board - with Low Profile Flange

Straight PCB

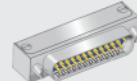


280-026 Pin
Page B-30



280-027 Socket
Page B-32

Right Angle PCB



280-028 Pin
Page B-34



280-029 Socket
Page B-36

HiPer-D M24308 Combo Ds

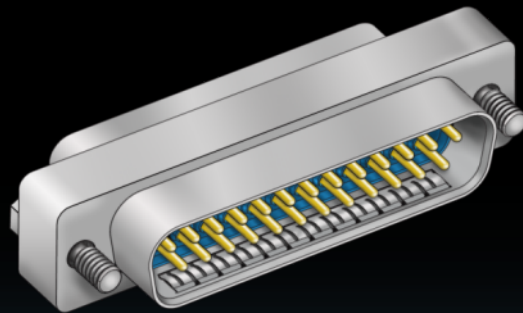
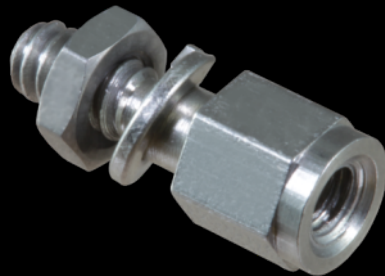
For power, signal and RF applications

- Size #8 power and 50 ohm or 75 ohm RF contacts
- Mixed layouts with #8's and #20's
- 200°C continuous operating temperature
- 20 tooled layouts
- Crimp and PC tail terminations



HiPer-D High-Performance M24308 Connector Accessories

- Metallic Protective covers
- Sav-Con[®]s
- Jackpost Kits



HiPer-D High-Performance M24308 Connector Accessories

- Clamshell style, low profile, EMI backshell 289-005
- Solid environmental backshell 289-008



Hi-Speed HiPer-D High-Performance M24308

**Crimp contact non-environmental connectors with
#8 contacts for high speed data transmission**

- One-piece rugged machined aluminum shell
- Two to five size 8 Coax, Twinax, Quadrax or Ochito contacts
- Common ground plane (no insulators)
- Available in straight and right angle PCB versions



The widest range of
mission-critical interconnect
technologies in the world



**HiPer-D High-Performance M24308 Type
D-Subminiature Connectors and Accessories**