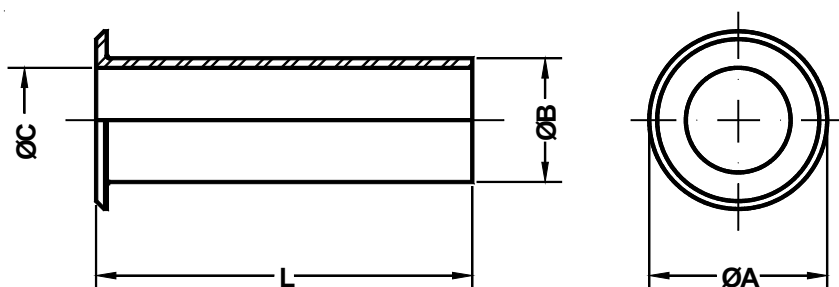


Bussola in neoprene
Neoprene sleeve

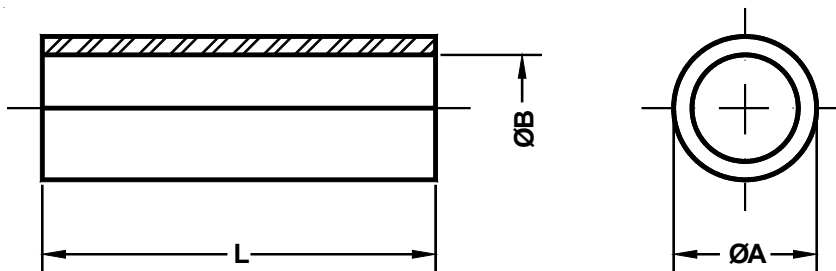


Part Number	ØA ±0.4	ØB ±0.4	ØC ±0.4	L ±0.4
IT 3420 - 4	12.8	7.7	5.6	69.9
IT 3420 - 6	15.7	10.8	7.9	66.7
IT 3420 - 8	18.9	14.0	11.1	63.5
IT 3420 - 10	22.6	15.6	14.3	60.3
IT 3420 - 12	27.5	18.8	15.9	57.2
IT 3420 - 16	33.4	23.5	19.1	54.0
IT 3420 - 20	40.6	31.5	23.8	50.8
IT 3420 - 24	46.9	34.7	31.8	47.6
IT 3420 - 28	53.0	41.0	34.9	44.5

IT3420-XX : Bussola di protezione e riduzione da usarsi con morsetto serracavo in classe A.

IT3420-XX : Neoprene sleeve for protection and reduction, used with class A cable clamps.

Bussola in neoprene
Neoprene sleeve



Part Number	ØA ±0.4	ØB ±0.4	L ±0.8
IT 3420 - 4A	7.7	5.6	50.8
IT 3420 - 6A	10.8	7.9	50.8
IT 3420 - 8A	13.5	11.1	50.8
IT 3420 - 10A	15.6	11.1	50.8
IT 3420 - 12A	18.8	13.7	50.8
IT 3420 - 16A	23.5	19.1	50.8
IT 3420 - 18A	28.3	23.8	50.8
IT 3420 - 20A	31.5	23.8	50.8
IT 3420 - 24A	34.7	28.6	50.8
IT 3420 - 28A	41.0	31.8	50.8

IT3420-XXA : Bussola di protezione e riduzione da usarsi con morsetto serracavo in classe C.

IT3420-XXA : Neoprene sleeve for protection and reduction, used with class C cable clamps.