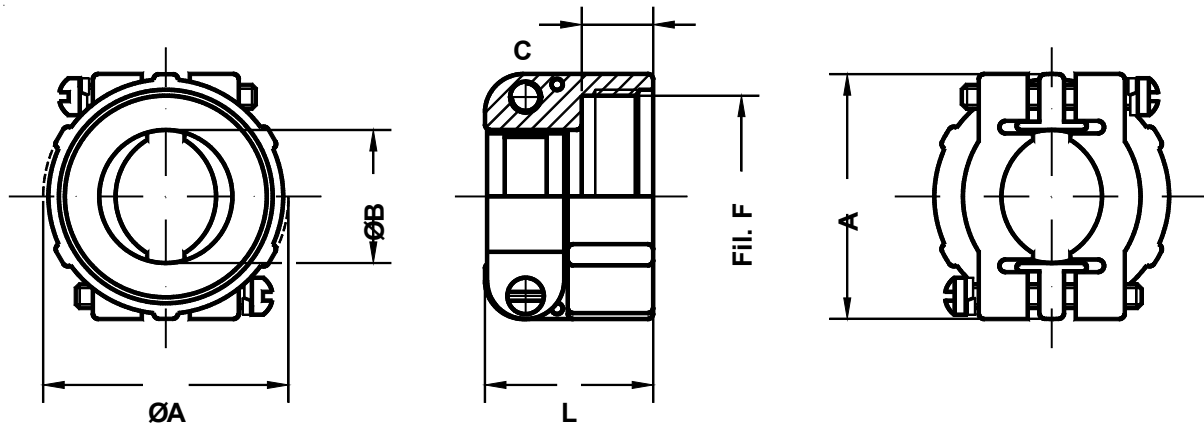


Serracavo Cable clamp

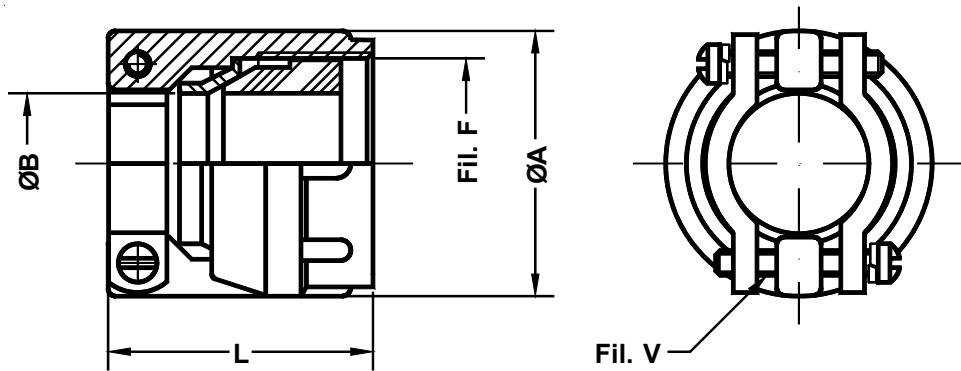


Codice Commital Commital P/N	Dimens. conn. Connector size	Bussola da utilizzare Sleeve to use	A	B	C	Filetto F F thread	L
IT 3057 - 4A	10SL - 12 - 12S	IT3420 - 4	25	8.2	10.2	0.6250 - 24UNEF	21.0
IT 3057 - 6A	14 - 14S	IT3420 - 6	27	11.2	10.2	0.7500 - 20UNEF	22.2
IT 3057 - 8A	16 - 16S	IT3420 - 8	28	14.2	10.2	0.8750 - 20UNEF	24.0
IT 3057 - 10A	18	IT3420 - 10	33	16.0	10.2	1.0000 - 20UNEF	28.5
IT 3057 - 12A	20 - 22	IT3420 - 12	35	19.0	10.2	1.1875 - 18NEF	24.0
IT 3057 - 16A	24 - 28	IT3420 - 16	43	23.8	10.5	1.4375 - 18NEF	26.0
IT 3057 - 20A	32	IT3420 - 20	51	31.7	12.5	1.7500 - 18NS	28.0
IT 3057 - 24A	36	IT3420 - 24	58	35.0	14.0	2.0000 - 18NS	29.4
IT 3057 - 28A	40	IT3420 - 28	65	41.2	14.0	2.2500 - 16UN	42.8

Morsetto serracavo per tenuta meccanica su cavo multipolare sotto guaina.

General duty cable clamp suitable for jacketed or multipolar cable or wires protected by tubing.

Serracavo
Cable clamp



Cod. Commital <i>Commital P/N</i>	Dim. conn. <i>Conn. size</i>	Bussola da utilizzare <i>Sleeve to use</i>	A	B		Filetto F <i>F thread</i>	L	Filetto V <i>V thread</i>
				min.	Max.			
IT3057 - 4C	10SL - 12 - 12S	IT3420 - 4A	22.6	2.38	7.93	0.6250 - 24UNEF	32.3	6 - 32 NC
IT3057 - 6C	14 - 14S	IT3420 - 4A / 6A	25.8	5.84	11.12	0.7500 - 20UNEF	32.3	6 - 32 NC
IT3057 - 8C	16 - 16S	IT3420 - 6A / 8A	28.1	8.00	13.84	0.8750 - 20UNEF	32.3	6 - 32 NC
IT3057 - 10C	18	IT3420 - 6A / 10A	31.0	9.60	15.87	1.0000 - 20UNEF	35.3	6 - 32 NC
IT3057 - 12C	20 - 22	IT3420 - 8A / 12A	37.3	11.30	19.00	1.1875 - 18NEF	35.7	8 - 32 NC
IT3057 - 16C	24 - 28	IT3420 - 8A / 12A / 16A	42.0	15.50	23.80	1.4375 - 18NEF	38.5	8 - 32 NC
IT3057 - 20C	32	IT3420 - 12A / 16A / 20A	54.0	23.40	31.75	1.7500 - 18NS	44.8	250 - 20 NC
IT3057 - 24C	36	IT3420 - 16A / 18A / 24A	57.1	23.40	35.00	2.0000 - 18NS	51.6	250 - 20 NC
IT3057 - 28C	40	IT3420 - 16A / 20A / 28A	63.5	29.90	41.25	2.2500 - 16UN	51.6	250 - 20 NC

Morsetto serracavo a tenuta meccanica ed ambientale su cavo multipolare sotto guaina.

Waterproof cable clamp suitable for jacketed cable or wires protected by tubing. Assures watertight integrity of connector.