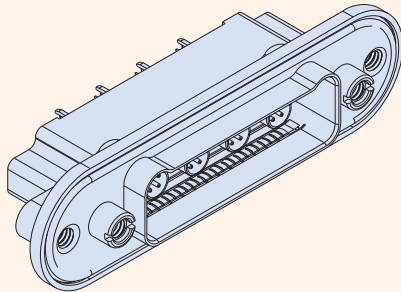


SERIES 792

High-Speed Ultraminiature Rectangular Connectors



792-021P Quadrax PCB Receptacle Connectors, Panel Mount Epoxy-Sealed Straight PC Tail Quadrax Contacts, O-ring Flange



Quadrax PCB contacts. Blind mate. Panel mount with O-ring. Series 792 PCB mount Quadrax connectors are intended for 100BASE-T and ARINC 664 protocols. 792-019P connectors feature quadrax contacts with straight printed circuit board tails, machined aluminum shells and environmental protection. Scoop-proof interface for problem-free service. Military-grade performance and construction.

Technical Data	
Specifications	
■	Operating temperature: -65 to +175 °C
■	Current rating, size 23 contact: 5A
■	Current rating, Quadrax contacts: 1.5A
■	Voltage rating (DWV): 750 Vac
■	Shock: EIA-364-27 condition D
■	Vibration: EIA-364-28 condition V, letter E
■	Insulation Resistance: 5000 MΩ min.
■	Shell-to-shell resistance with EMI spring: 2.5 mΩ max.
■	Altitude immersion: 75,000 feet
Construction	
■	Shell: aluminum alloy
■	Metal insert: aluminum, nickel plated
■	Insulators: high-grade rigid dielectric
■	Interfacial seal: fluorosilicone blend
■	Size 23 contacts: copper alloy, 50 microinches gold over nickel plating
■	Quadrax contacts: Copper alloy, 50 microinches gold over nickel plating. Insulators: high-grade rigid thermoplastic
■	EMI spring: copper alloy, nickel plated
■	Hardware: 300 series SST, passivated
■	Potting compound: epoxy

How To Order						
	Sample P/N → 792-021P	C-3P3	M	E	N	F
Product	792-021P = Panel Receptacle, PC Tail Quadrax Pin Contacts					
Insert Arrangement	See Table 2					
Shell Finish	M = Electroless Nickel MT = Nickel-PTFE					
EMI Spring	E = EMI Spring N = Omit EMI Spring					
Mating Hardware (Table 1)	N = No hardware P = Jackposts B = Female Guide Bushings					
O-ring	N = No O-ring F = Fluorosilicone O-ring (non-conductive) C = Conductive fluorosilicone O-ring S = Metal EMI panel spring (non-environmental)					

Table 1 Mating Hardware		
 N No Hardware Blind tapped holes	 P Jackposts 8-32 UNC-2B thread	 B Guide Bushings Non-removable

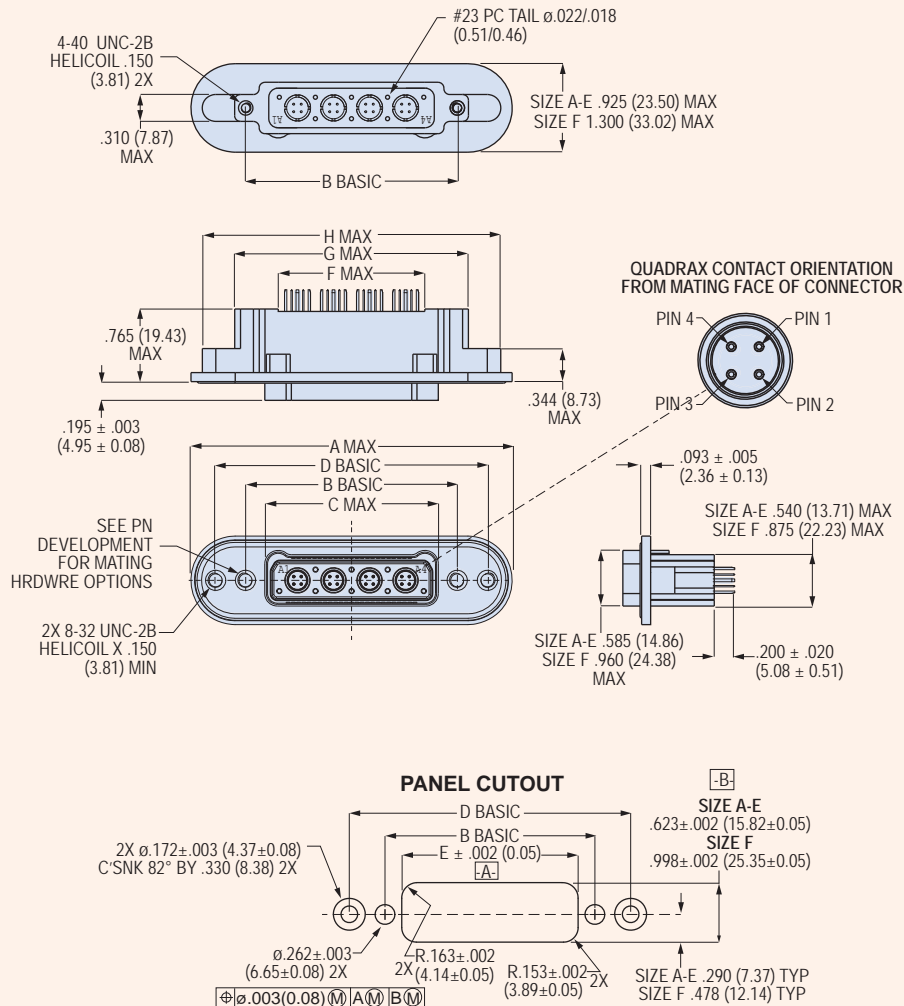
Table 2 Insert Arrangements					
Insert arrangement	Number of Contacts		Insert arrangement	Number of Contacts	
	#23	#8		#23	#8
A-1P1, A-1G1*		1	D-27P3	24	3
A-3P1	2	1	D-4P4, D-4G4*		4
B-23P1	22	1	D-12P4	8	4
B-2P2, B-2G2*		2	E-45P3	42	3
B-6P2	4	2	E-5P5, E-5G5*		5
C-24P2	22	2	E-15P5	10	5
C-3P3, C-3G3*		3	F-9P9, F-9G9*		9
C-9P3	6	3	F-31P9	22	9

Cavity identification numbers shown are for mating face of plug connectors with socket contacts.
 * Insert arrangements with "G" designator are grounded type with metal insert. Insert arrangements with "P" designator have thermoplastic dielectric.

792-021P Quadrax PCB Receptacle Connectors, Panel Mount Epoxy-Sealed Straight PC Tail Quadrax Contacts, O-ring Flange

792-021P Dimensions

Shell Size	A Max		B Basic		C Max		D Basic		E ±.002 (0.05)		F Max		G Max		H Max	
	In.	mm.	In.	mm.	In.	mm.	In.	mm.	In.	mm.	In.	mm.	In.	mm.	In.	mm.
A	2.220	56.39	1.075	27.31	.690	17.53	1.699	43.15	.725	18.42	.460	11.68	1.310	33.27	1.984	50.39
B	2.595	65.91	1.450	36.83	1.065	27.05	2.074	52.68	1.100	27.94	.835	21.21	1.685	42.80	2.359	55.92
C	2.970	75.44	1.825	46.36	1.440	36.58	2.449	62.20	1.475	37.47	1.210	30.73	2.060	52.32	2.734	69.44
D	3.345	84.96	2.200	55.88	1.815	46.10	2.824	71.73	1.850	46.99	1.585	40.26	2.435	61.85	3.109	78.97
E	3.720	94.49	2.575	65.41	2.190	55.62	3.199	81.25	2.225	56.52	1.960	49.78	2.810	71.37	3.484	88.49
F	3.720	94.49	2.575	65.41	2.190	55.62	3.199	81.25	2.225	56.52	1.960	49.78	2.810	71.37	3.484	88.49



SERIES 792

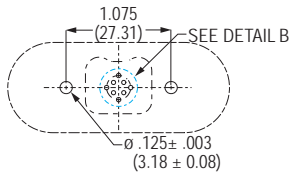
High-Speed Ultraminiature Rectangular Connectors, Panel Mount



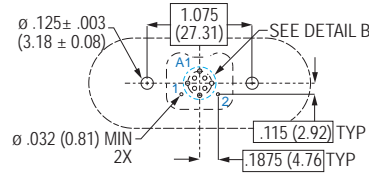
792-021P Quadrax PCB Receptacle Connectors, Panel Mount

Epoxy-Sealed Straight PC Tail Quadrax Contacts, O-ring Flange

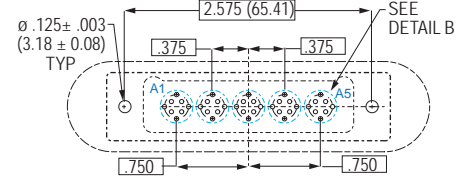
792-021P Printed Circuit Board Layouts



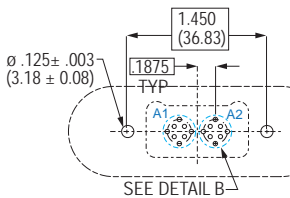
A-1P1, A-1G1



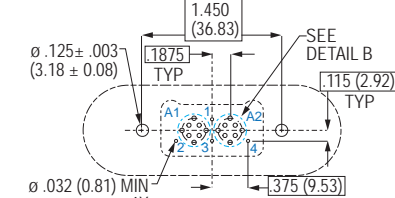
A-3P1



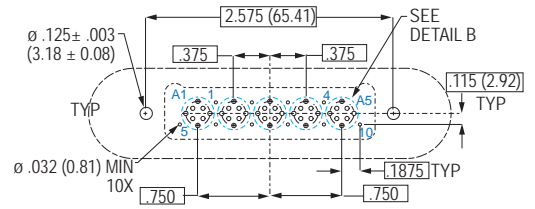
E-5P5, E-5G5



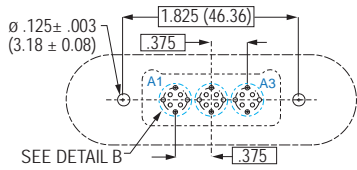
B-2P2, B-2G2



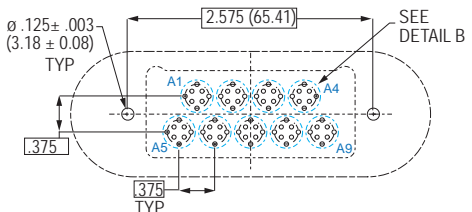
B-6P2



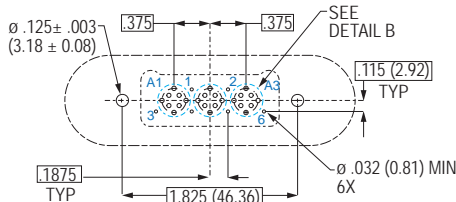
E-15P5



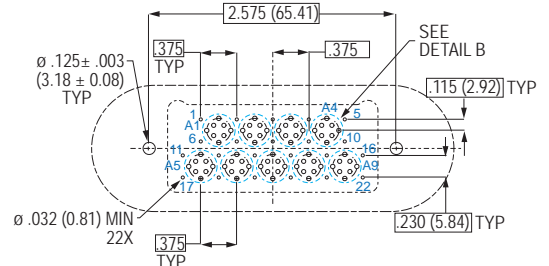
C-3P3, C-3G3



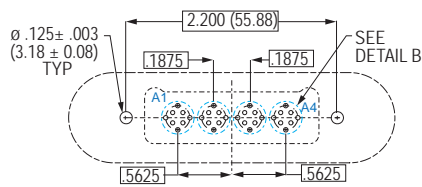
F-9P9, F-9G9



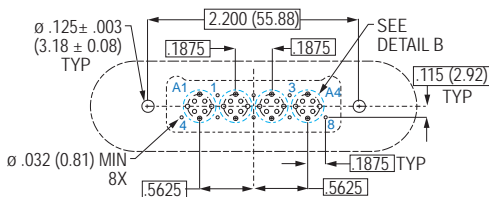
C-9P3



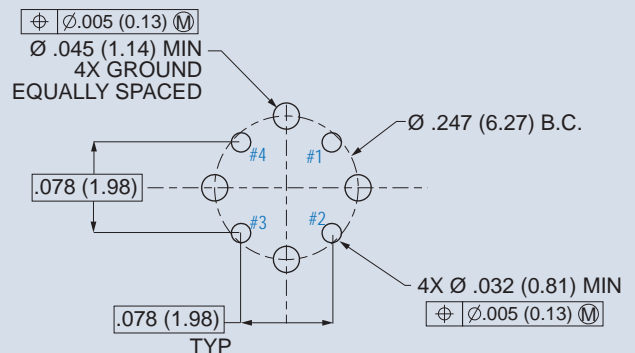
F-31P9



D-4P4, D-4G4



D-12P4



DETAIL B
QUADRAX PIN CONTACT
COMPONENT SIDE OF BOARD