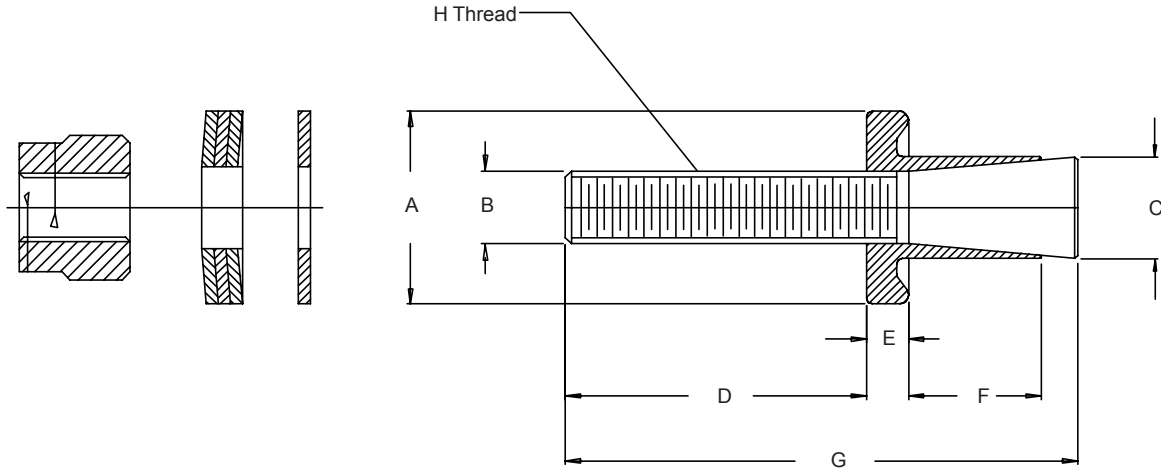


# 687-481 Metric Thread Ground Control Earth Bonds For Steel and Stainless Steel Plate



**687-481 - 26**

Product Series ———— Dash Number  
 23 = M6 Thread for Thin Plate  
 24 = M10 Thread for Thin Plate  
 25 = M6 Thread for Thick Plate  
 26 = M10 Thread for Thick Plate

Specifications				
Dash Number Dimension/Characteristic	Thin Plate		Thick Plate	
	Part # -23	Part # -24	Part # -25	Part # -26
A		.984 (25.0)	.984 (25.0)	.984 (25.0)
B (Major Diameter)	.236 (6.04)	.394 (10.0)	.236 (6.0)	.394 (10.0)
C		.748 (19.0)		.531 (13.5)
D (After Crimping)	.984 (25.0)	1.181 (30.0)	.984 (25.0)	1.181 (30.0)
E		.217 (5.5)		.138 (3.5)
F	.177 (4.5)	.177 (4.5)	.433 (11.0)	.433 (11.0)
G		1.693 (43.0)		1.791 (45.5)
H Thread	M6	M10	M6	M10
Drilling Diameter ± .004 (.1)		.752 (19.1)		.535 (13.6)
Hydraulic Setting Tool	600-124	600-125	600-124	600-125
Torque Value	8.0Nm	34Nm	8.0Nm	34Nm
Use with Plate Thickness:				
Minimum	.059 (1.5)	.078 (2.0)	.158 (4.0)	.158 (4.0)
Maximum		.158 (4.0)		unlimited

1. Metric dimensions (mm) are indicated in parentheses.
2. Aluminum plate versions are also available, consult factory for product information.