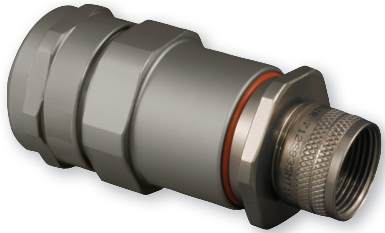




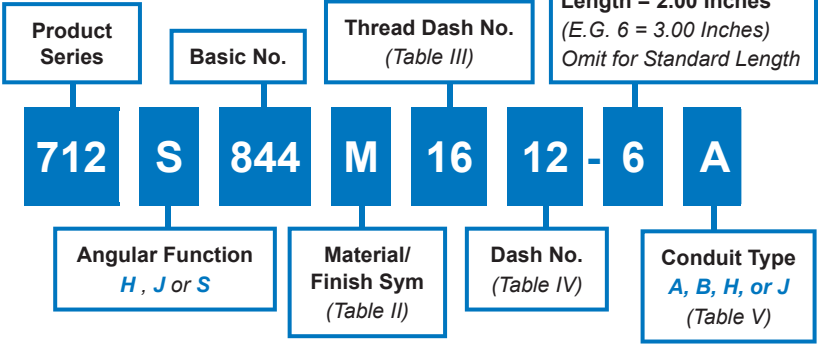
712-844
Heavy-Duty Environmental System - Composite
Conduit to Transition or End Fitting Backshell
for Series 75 Metal-Core Conduit

Weight-saving composite Heavy-Duty Environmental System conduit-to-transition or end fitting backshell

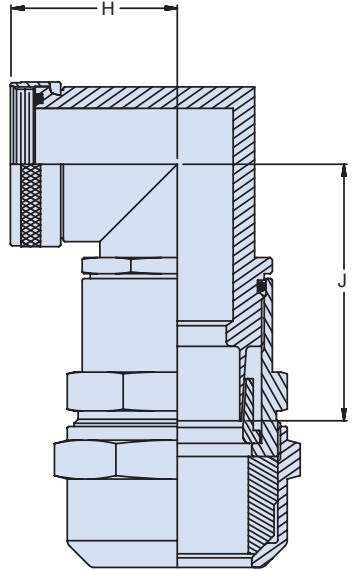
How To Order



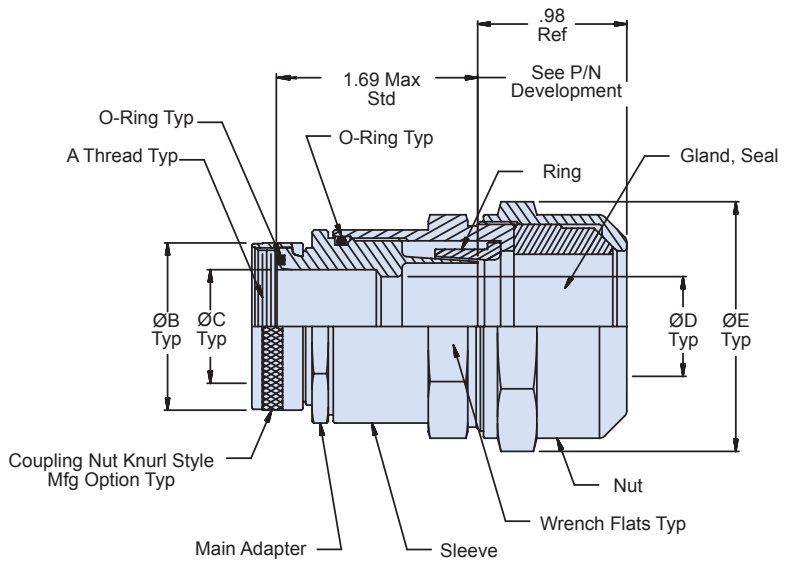
Optional Length in 1/2 Increments Symbol **S** Only. Minimum Length = 2.00 Inches (E.G. 6 = 3.00 Inches) Omit for Standard Length



D



SYM J - 90°



SYM S - Straight

Intermateability Guide	
For use with	
Y transitions	710-106, 710-107, 710-370,
T transitions	710-108, 710-109, 710-371
Connector adapters	713-100, 713-101, 713-110
Bulkhead adapters	710-100, 710-101, 710-372
Bulkhead feed-thrus	710-102, 710-103, 710-373
Male Pipe thread adapters	710-114, 710-115, 710-405
Female pipe thread adapters	710-116, 710-117, 710-406

Material and Finish

- Adapters, Elbows, and Ring: See Table II
- Sleeves and Nuts: High grade engineering thermoplastic, color Haze Gray/NA
- O-Rings & Gland: Silicone rubber/NA

712-844

Heavy-Duty Environmental System - Composite Conduit to Transition or End Fitting Backshell for Series 75 Metal-Core Conduit

Series 75
Metal-Core Conduit

Table III: Dash No./Dimensions

Thread Dash No.	A Thread	Ø B Max	Ø C
08	1/2-20 UNF	.640 (16.3)	.250 (6.35)
12	5/8-24 UNEF	.760 (19.3)	.375 (9.53)
16	3/4-20 UNEF	.890 (22.6)	.500 (12.7)
20	7/8-20 UNEF	1.024 (26.0)	.625 (15.9)
24	1.00-20 UNEF	1.152 (29.2)	.750 (19.1)
32	1 5/16-18 UNEF	1.488 (37.8)	1.000 (25.4)
40	1 1/2-18 UNEF	1.676 (42.7)	1.250 (31.8)
48	1 3/4-18 UNS	1.960 (49.8)	1.500 (38.1)
64	2 1/4-16 UN	2.460 (62.5)	2.000 (50.8)
80	2 3/4-16 UN	3.000 (76.2)	2.500 (63.5)
96	3 1/4-16 UN	3.450 (87.6)	3.000 (76.2)

Table II: Material/Finish

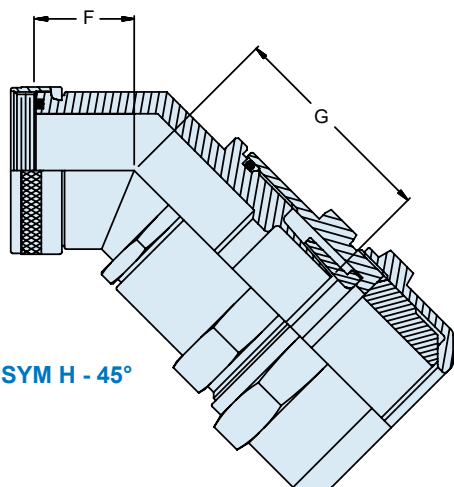
Sym	Material	Finish Description
BO	Brass	Unplated
BN	Brass	Cadmium/Olive Drab Over Electroless Nickel (1,000 Hour Salt Spray)
BM	Brass	Electroless Nickel
BMT	Brass	Nickel-PTFE
M	Aluminum Alloy	Electroless Nickel
MT	Aluminum Alloy	Nickel-PTFE
NF	Aluminum Alloy	Cadmium/Olive Drab Over Electroless Nickel (1,000 Hour Salt Spray)
Z1	300 Series SST	Passivate
ZM	300 Series SST	Electroless Nickel
ZN	Aluminum Alloy	Zinc Nickel/Olive Drab Over Electroless Nickel (1,000 Hour Salt Spray)
ZW	300 Series SST	Cad O.D. Over Electroless Nickel

Table IV: Recommended Torque

Conduit Size Code	±5 Inch Pounds	
	Sleeve	Nut
08	120	40-60
12	120	↑
16	140	↑
20	140	↑
24	150	↑
32	170	↑
40	170	↑
48	170	↑
64	170	↓
80	170	40-60

Table IV: Dash No./Dimensions

Dash No.	D I.D.	Ø E Max	F Max	G Max	H Max	J Max
08	.250 (6.4)	1.18 (30.0)	.71 (18.0)	1.63 (41.4)	.88 (22.4)	1.90 (48.3)
12	.375 (9.5)	1.32 (33.5)	.74 (18.8)	1.66 (42.2)	.95 (24.1)	1.97 (50.0)
16	.500 (12.7)	1.45 (36.8)	.76 (19.3)	1.70 (43.2)	1.02 (25.9)	2.07 (52.6)
20	.625 (15.9)	1.66 (42.2)	.79 (20.0)	1.73 (43.9)	1.12 (28.4)	2.14 (54.4)
24	.750 (19.1)	1.79 (45.5)	.83 (21.1)	1.78 (45.2)	1.19 (30.2)	2.21 (56.1)
32	1.000 (25.4)	2.06 (52.3)	.88 (22.4)	1.85 (47.0)	1.32 (33.5)	2.38 (60.5)
40	1.250 (31.8)	2.32 (58.9)	1.07 (27.2)	1.91 (48.5)	1.52 (38.6)	2.52 (64.0)
48	1.500 (38.1)	2.59 (65.8)	1.16 (29.5)	2.01 (51.1)	1.66 (42.2)	2.73 (69.3)
64	2.000 (50.8)	3.26 (82.8)	1.26 (32.0)	2.11 (53.6)	1.99 (50.5)	3.09 (78.5)
80	2.500 (63.5)	3.80 (96.5)	1.31 (33.3)	2.18 (55.4)	2.26 (57.4)	3.21 (81.5)
96	3.000 (76.2)	4.45 (113.0)	1.42 (36.1)	2.28 (57.9)	2.59 (65.8)	3.42 (86.9)



SYM H - 45°

Table V: Conduit Type

Conduit Type	Part Number	Configuration
A	750-192	Brass conduit with single braided shield and jacket
B	750-194	Brass conduit with double braided shield and jacket
H	750-192	Stainless steel conduit with single braided shield and jacket
J	750-192	Nickel/iron conduit with single braided shield and jacket

D